



# Hearing and Swallowing Disorders ICD-9-CM Recommendations

American Speech-Language-Hearing Association  
September 29, 2006  
Baltimore, MD



# Presenters

- Kyle C. Dennis, PhD, CCC-A  
Department of Veterans Affairs  
National Audiology and Speech Pathology  
Program Office
- Dee Adams Nikjeh, PhD, CCC-SLP  
Speech-Language Pathologist  
Ear, Nose & Throat Associates

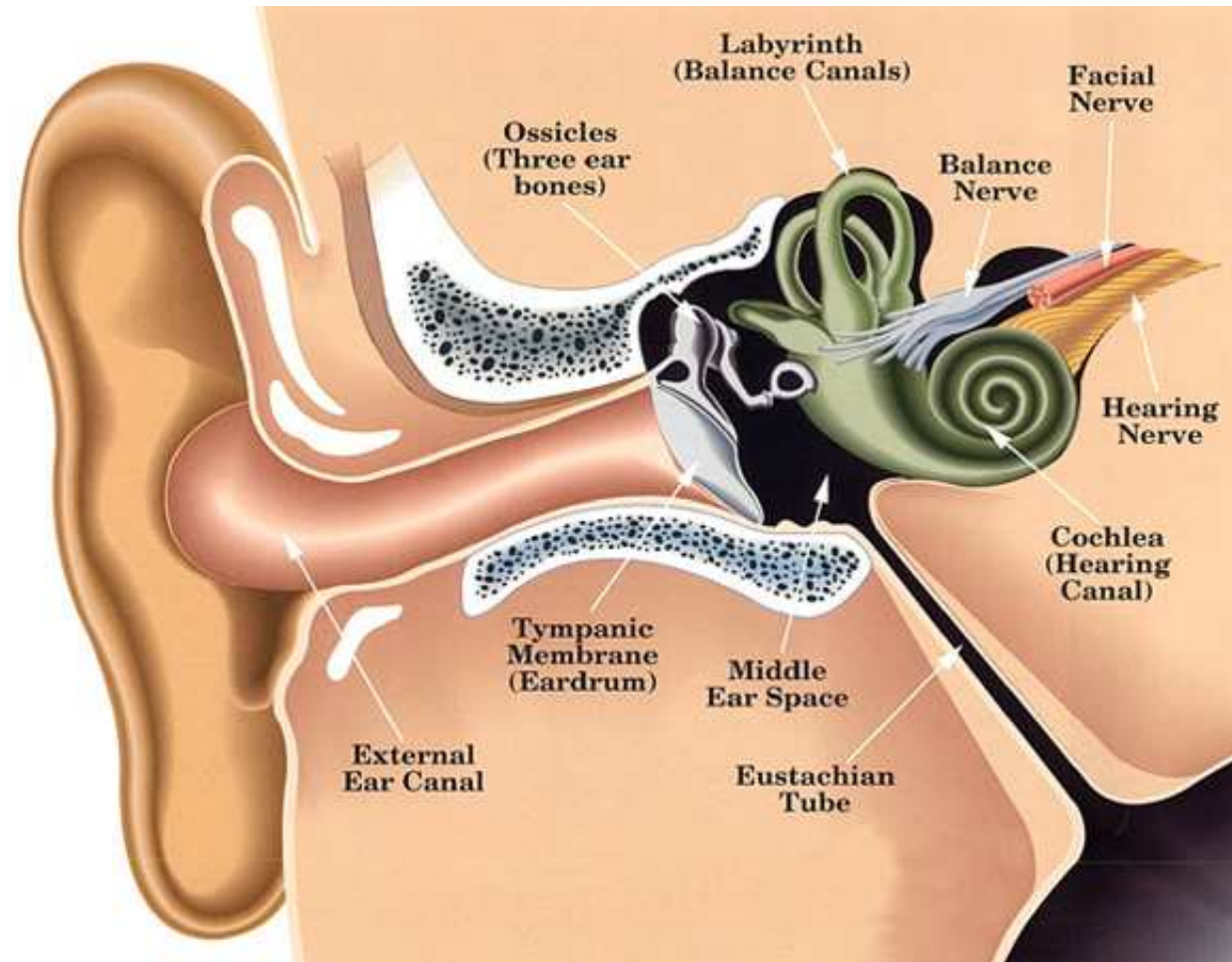
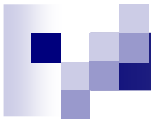




# Hearing loss

- This proposal extends the 2007 code revisions in Chapter 6, Nervous System and Sense Organs, Disease of the Ear and Mastoid (380-389), specifically in regard to the use of laterality and the use of the term sensorineural hearing loss.





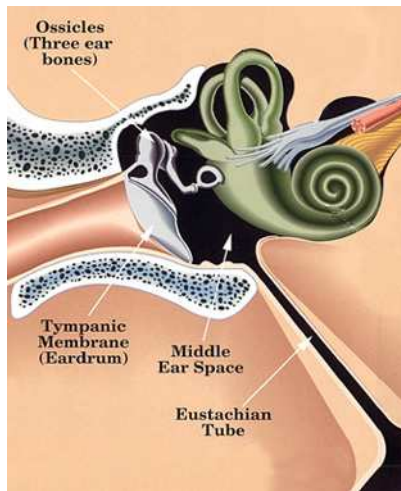


# Hearing loss

- Extend the use of the term sensorineural hearing loss to 389.18 (sensorineural hearing loss, combined type).



# Middle Ear



- Normally air-filled
- Structures include:
  - Tympanic Membrane
  - 3 ossicles (malleus, incus, stapes)
- Sound is amplified via lever action of ossicles and transmitted to inner ear
- Pressure-equalization via Eustachian tube



# Inner Ear



- Encased in the temporal bone
- Consists of fluid-filled membranous sacs and ducts within a bony labyrinth
- 2 major structures:
  - Cochlea (hearing)
  - Semicircular canals (balance)
- Sensory and supporting hair cells
- Sound is transmitted via a “traveling wave” through the cochlea, which causes excitation of hair cells and stimulation of the auditory nerve





# Hearing loss

- The term “combined type” is redundant because “sensorineural” already conveys a disorder with sensory and neural components.
- The term causes confusion and is inconsistent with use in the U.S.
- We propose the consistent terminology used for 389.15 and 389.16 to the remaining sensorineural hearing loss code, 389.18.





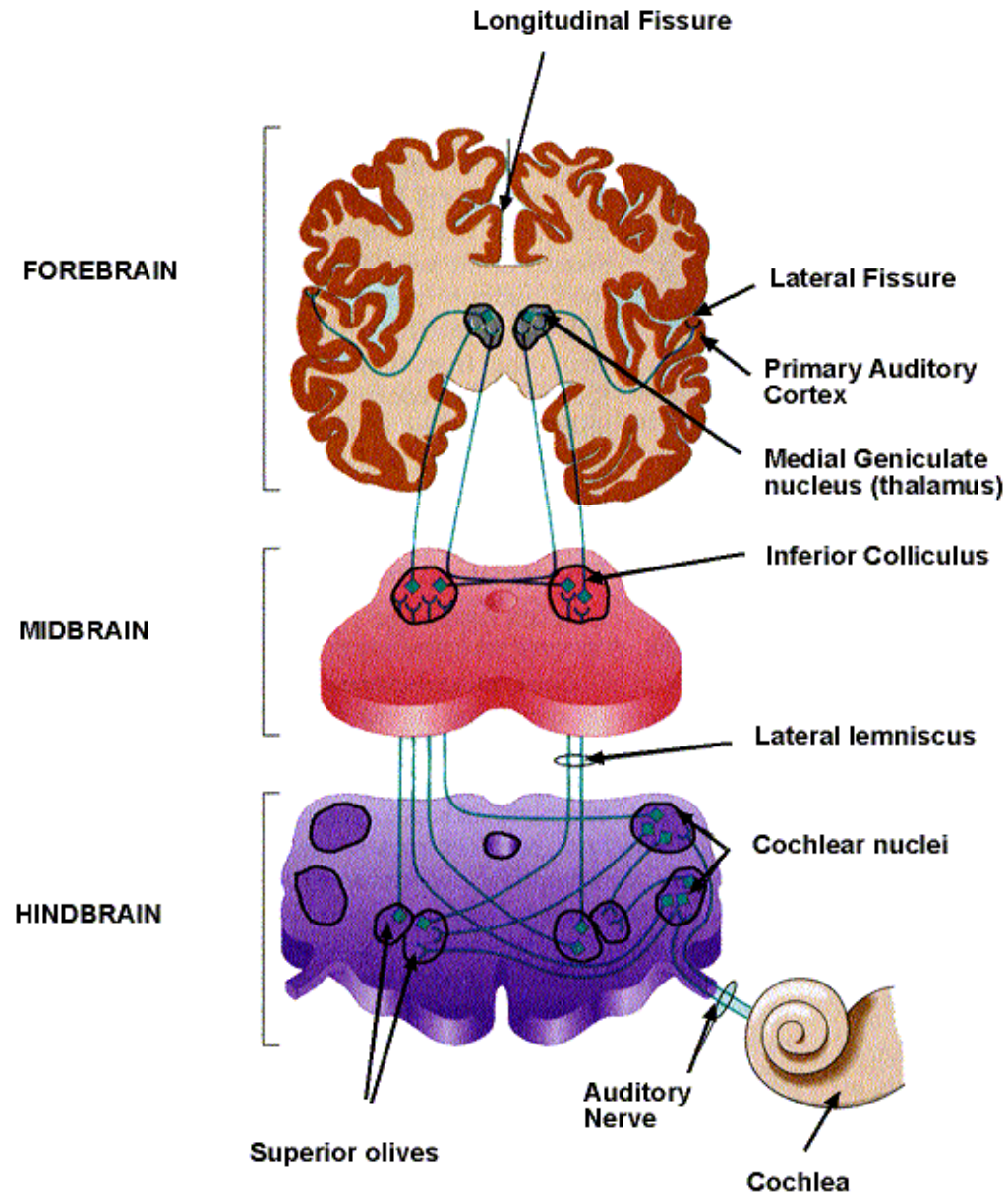


# Central Hearing Loss

- Revision of central hearing loss (389.14) to remove references to laterality as such references are diagnostically inaccurate.



# Pathway of the Auditory Nerve





## Eliminate archaic term – “mutism”

- 389.7 Deaf mutism, not elsewhere classifiable
- Inaccurate and offensive
- **Nonspeaking** is more descriptive



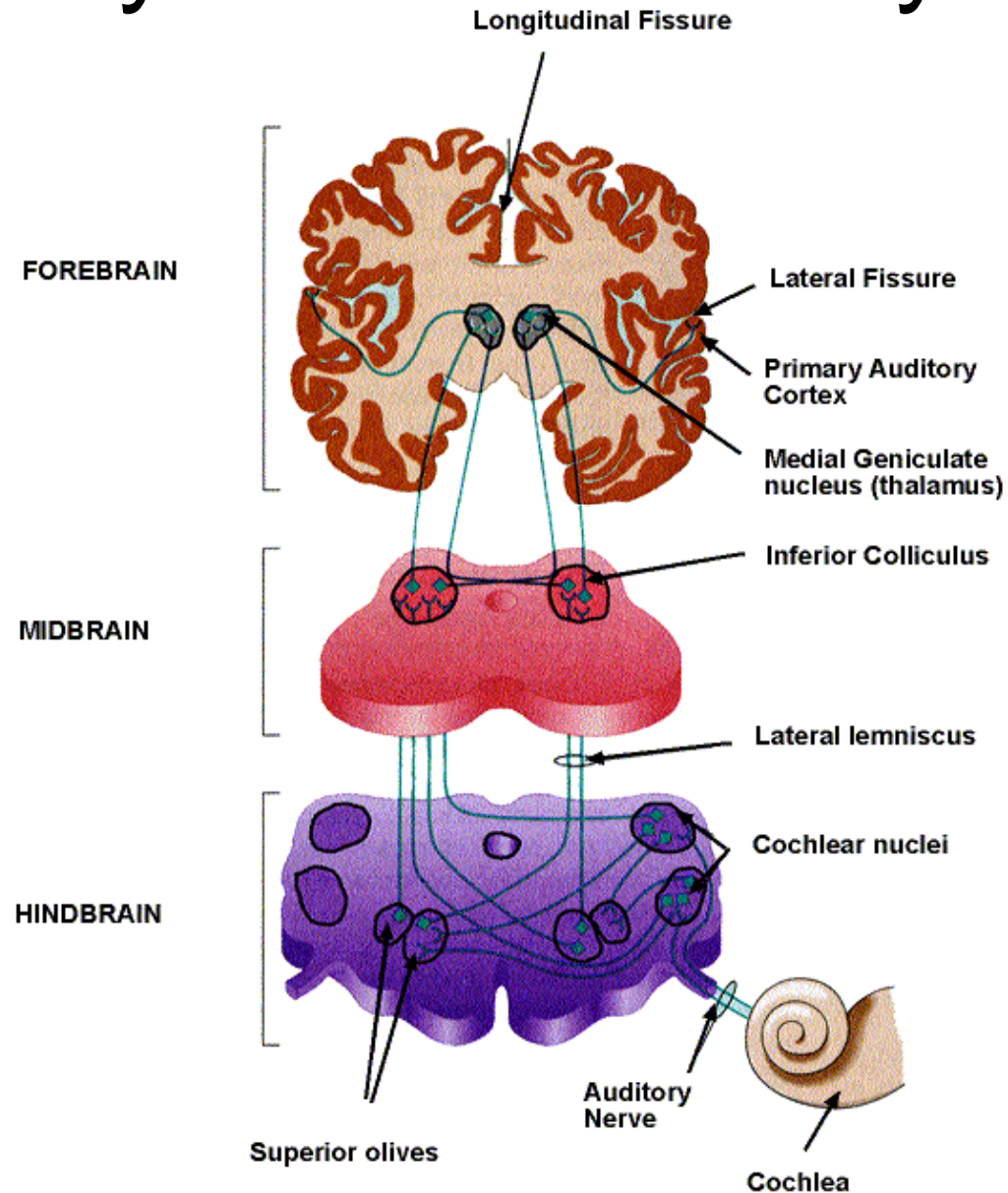


# Acquired Auditory Processing Disorder

- Add new code for acquired auditory processing disorders – distinct from developmental
- Refers to difficulties in processing of auditory frequency, intensity and temporal information in CNS
- Manifested in poor performance in sound localization, auditory discrimination, temporal integration, temporal discrimination...



# Pathway of the Auditory Nerve





# Dual sensory impairment

- Add a new code for dual sensory impairment (combined visual and hearing disorders)
- Synergistic effect of two sensory losses compared to each one individually
- Unique diagnostic entity that creates severe communication and learning condition





# Hearing Conservation

- Add supplemental code
- Hearing conservation includes:
  - ☐ hearing level monitoring
  - ☐ employee education
  - ☐ acoustic analysis of noise
  - ☐ hearing loss prevention





# Disability Examination

- Add supplemental V code
- Explains purpose of examination
- Used in addition to codes for conditions found after study







# Speech & Language Delay due to Hearing Loss

- Hearing is the major sense for learning speech and language
- Children with hearing loss at risk for speech and language developmental delay
- Separate from other etiologies for speech and language delay and requires separate diagnostic code





# PROPOSED REVISIONS TO DYSPHAGIA CODE 787.2

American Speech-Language-Hearing Association



# Dysphagia - Swallowing disorders

- Revise 787.2 (dysphagia) to recognize phases of swallowing as distinct diagnostic and functional entities.





# WHY THE CHANGE REQUEST?

- Dysphagia is a disorder of swallowing
- Swallowing occurs in dynamic phases from mouth to stomach
- Dysphagia symptoms significantly vary depending on the affected phase
- Treatment strategies are specific to the affected phase of swallowing



# SWALLOWING PHASES

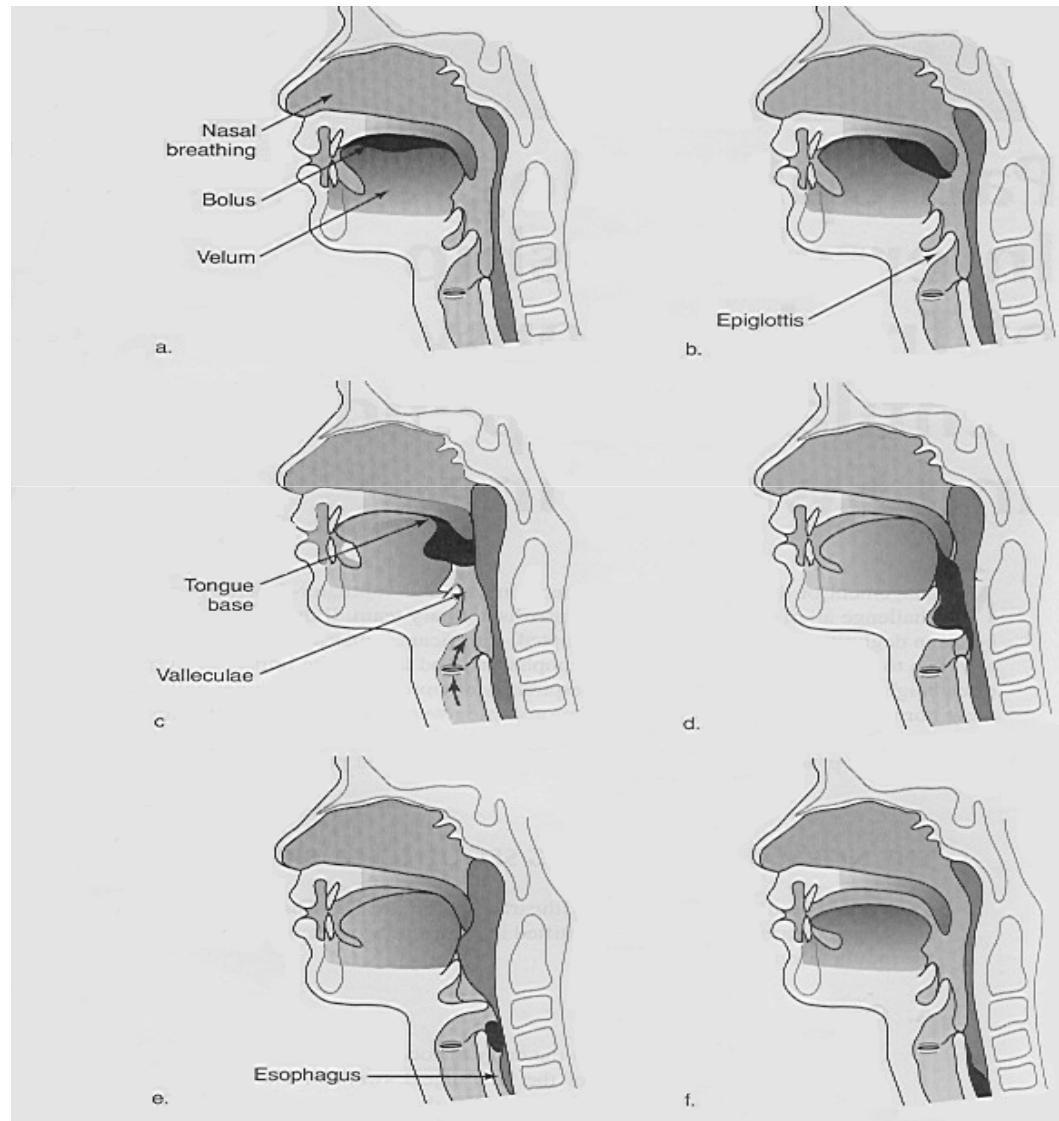
a. Oral Phase

b. Oropharyngeal Phase

c. Oropharyngeal Phase

d. Pharyngeal Phase

e. Pharyngoesophageal Phase





# BENEFITS OF NEW CODES

- Clarification of the disorder
- Definitive diagnoses
- Efficiency of treatment planning





# PROPOSED CHANGES TO 787.2

- **787.21 Oral Phase**
  - Impaired structure/physiology of palate, tongue, lips, cheeks
- **787.22 Oropharyngeal Phase**
  - Impaired structure/physiology of tongue base and pharyngeal walls
- **787.23 Pharyngeal Phase**
  - Impaired structure/physiology of pharynx and larynx
- **787.24 Pharyngoesophageal Phase**
  - Impaired structure/physiology of upper esophageal sphincter
- **787.25 Dysphagia, unspecified**
- **New recommendation: Dysphagia, Combined type**

